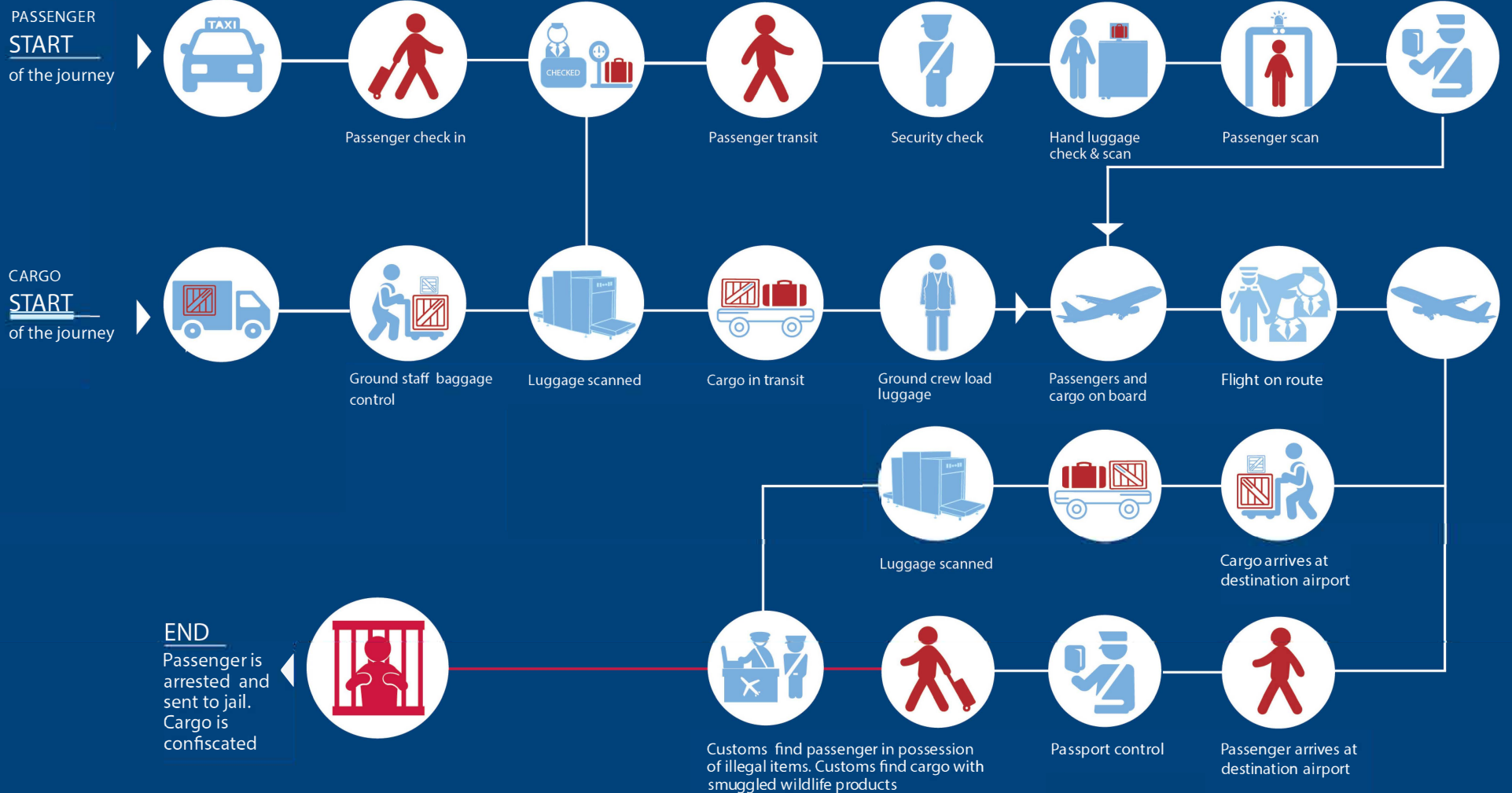
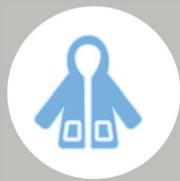


# THE TRAIL OF THE TRAFFICKER

The main routes wildlife is smuggled through airports  
What to look out for and how you can help

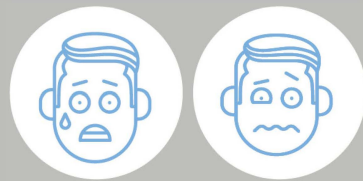


## WHAT SHOULD YOU LOOK FOR?



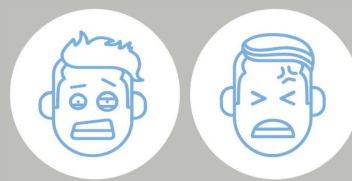
### Inappropriate Attire

- Inappropriate Clothing
- Wrong clothes for the climate
- Large, baggy coats
- Clothes do not match the occupation



### Involuntary Responses

- Sweating, dilated pupils
- Avoids making eye contact
- Nervousness
- Shaking & twitching



### Nervous Body Movements/ Speech

- Adjusts clothing/jewelry
- Talks very fast
- Delayed response to questions
- Repeats the question



### Use Your Senses

- Odd smells
- Animal sounds/noises
- Moving clothing

### CHECK IN STAFF

Route and connections do not make sense  
Luggage smells odd

### SECURITY

Clothes are too big  
Wrong clothes for the climate  
Multiple connection boarding passes

### X-RAY SCREENER

Luggage smells odd  
Scan shows orange (organic and possibly wildlife) or green (possibly ivory) materials that could also be of unusual dimensions

### IMMIGRATION

Abnormal travel shown by recent multiple visas for certain countries for very short trips  
Nervous passenger

### CARGO HANDLER

Cargo origin does not match declared contents (eg. bananas from Canada)  
Cargo container has air holes when it shouldn't

### GROUND STAFF

Luggage is moving  
Luggage has an odd smell  
Luggage makes a noise  
Luggage has odd/multiple connection tags

### FLIGHT CREW

Passenger does not eat or leave their seat  
Passenger seems nervous  
Passenger smells odd  
Passenger is wearing large clothing and keeps it on during the flight

### CUSTOMS

Act on tip offs from airline staff  
Watch for known wildlife smuggling routes  
Frequent checks  
Check the person and small bags